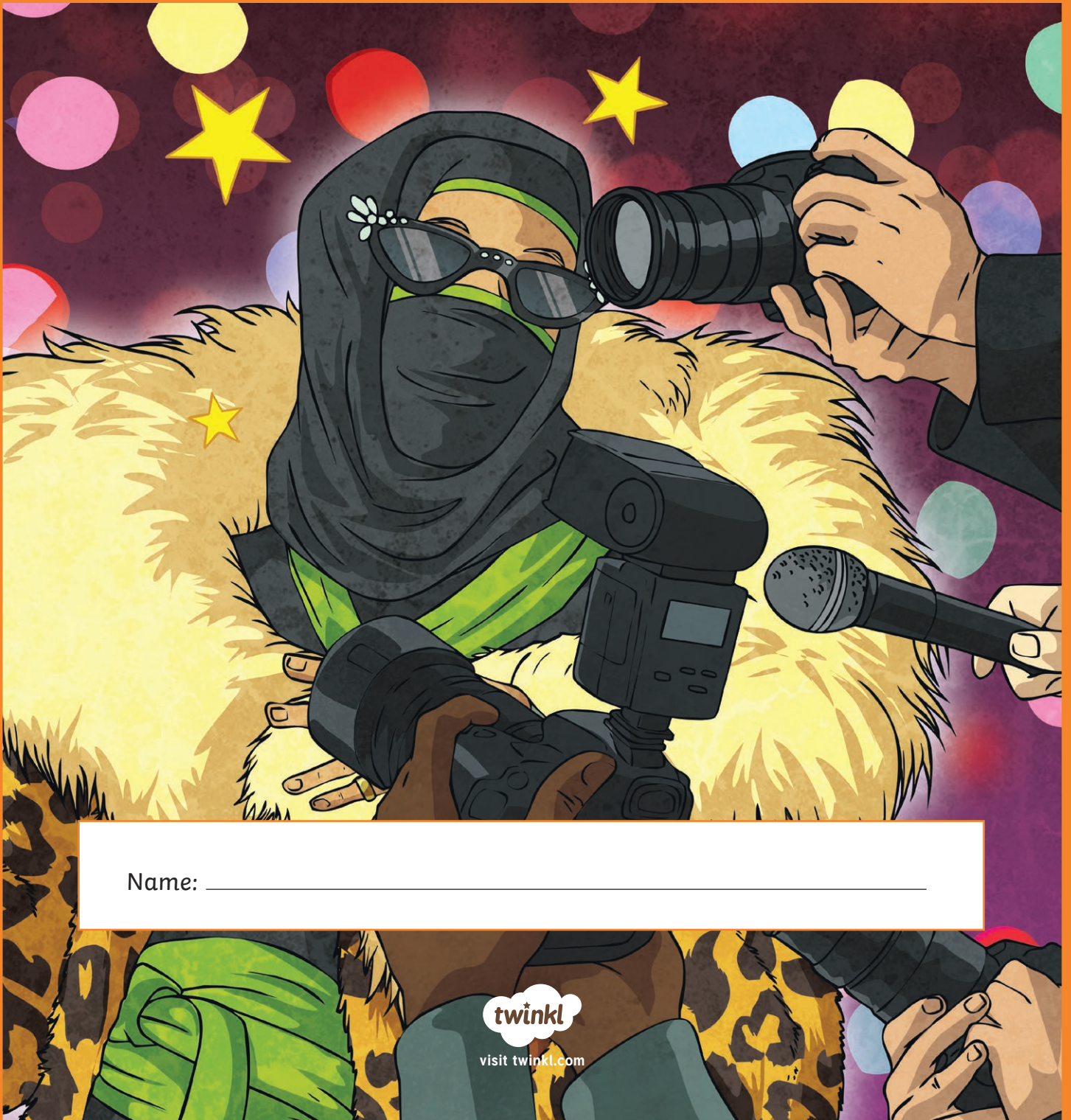


Year 6 SATs

Grammar, Punctuation & Spelling
Revision & Practice Booklet 6: Spelling



Name: _____

Common exception words are words that do not follow the common phonetic spelling rules or words where the usual rules act in an unusual way.

Throughout primary school, you may have been provided with a list of these words to learn, including:

- Year 1: **the, today, his, by**
- Year 2: **floor, because, many, Mr**
- Year 3 and 4: **arrive, centre, opposite, grammar**
- Year 5 and 6: **awkward, existence, occupy, relevant**

1 Which letter is missing from the following common exception words? Circle **one** letter for each word.

acommodate c m d

programe o g m

rythm h y u

goverment v r n



2 Edit and improve the following common exception words.

languige

twelth

marverlous

3 Write down as many smaller words as you can, using letters from the word **temperature**.

S38: Adding suffixes beginning with vowel letters to words of more than one syllable

A **suffix** is added to the end of a root word to make a new word.

When a word ends in **y**, change the **y** to an **i** before the **suffix** is added but **not before -ing**.

For example:

happy + est = happiest

The final **consonant** is **doubled** before the **vowel suffix** is added if the root word:

- ends with **one vowel** and a **consonant**
- has more than **one syllable**
- has the last **syllable** of the word **stressed**

For example:

begin + ing = beginning

1 Circle the correct spelling of the word in each row.

forgotten	forgoten	forggoten
shinyest	shinniest	shiniest
happyer	happier	hapier

2 Which letter is missing from the following words? Circle one letter for each word.

chanelling	n	l	g
gloomist	m	e	s
lisening	s	t	n
groovir	r	u	e



Words derived from Greek are more likely to have a y in place of an i within them.

Examples include:

pyramids

Egypt

crypt

mystery

mystic

dynasty

myths

symbol

gymnastics

1 Write the correct word to complete each of the following sentences.

We visited the museum to learn about ancient _____.

The _____ of Giza are amazing.

Where my trainers have disappeared to is a _____.

Jamelia came first in the vault in her _____ competition.

We have been writing _____ and legends this week.

A dove is a _____ of peace.

The _____ predicted the future.

2 Write down as many smaller words as you can, using letters from the word **mysterious**.

Sometimes the **short sound /u/** is spelt using **ou**.

Examples include:

cousin	touch	young
double	trouble	couple
country	courage	rough

1 Edit and improve the following words.

incourage

innuff

flurrish

2 Circle the correct spelling of the word in each row.

tutching

tuching

touching

youngstir

youngster

yungster

3 Write down as many smaller words as you can, using letters from the word **encouragement**.



A prefix is added to the beginning of a root word to make a new word. They all have different meanings:

dis-
opposite of

re-
again

un-
not

auto-
self/same

mis-
opposite

super-
better quality

anti-
against/
opposite

de-
reduce/remove

in-/im-/il-
not/in

co-
together

over-
too much

1 Draw lines to match each prefix to the correct root word so that it makes a new word.

Prefix
anti-
auto-
dis-
mis-
im-
in-

Root word
polite
appear
effective
clockwise
behave
mobile

2 Complete the words by adding the correct prefix from those given below. Use each prefix once.

mis-

un-

re-

de-

il-

_____ happy

_____ legal

_____ make

_____ tour

_____ take

A **suffix** is added to the end of a root word to make a new word.

You can change **verbs** into **nouns** by adding the suffix **-ation** (meaning an action or a process).

For example:

expect + ation = expectation.

Sometimes the root word changes before the suffix is added.

When a word ends in a **y**, change the **y** to an **i** before adding the suffix **-ation**. Usually, a **c** is also added after the **i**.

For example:

specify + ation = specification

Drop the silent **-e** at the end of a root word before adding the suffix **-ation**.

For example:

circulate + ation = circulation

1 Edit and improve the following words.

creation

donasion

juration

2 Circle the correct spelling of the word in each row.

admiration

admiration

admiration

decoration

decoration

decoration

3 Write down as many smaller words as you can, using letters from the word **conversation**.



You can change **adjectives** into **adverbs** by adding the suffix **-ly**,

For example:

kind + ly = kindly.

The suffix **-ly** starts with a consonant letter so **in most cases**, it is added straight on to the root word. Sometimes, the root word changes before the suffix is added.

If the root word has **more than one syllable** and ends in a **y** with a **consonant letter before it**, the **y** is changed to an **i**.

For example:

happy + ly = happily

If the root word ends with **le**, remove **le**.

For example:

gentle + ly = gently

If the root word ends with **ic**, **-ally** is usually added.

For example:

comic + ally = comically

1 Complete the table below.

Adjective	+ly	Adverb
sad	+ly	
angry	+ly	
	+ly	magically
lazy	+ly	
	+ly	thoughtlessly
final	+ly	

2 Which letter is missing from the following words? Circle one letter for each word.

painfully n f l

beautifully u t l

colourfully l r f

thankflly f u l

Words which end in the /chuh/ sound usually have the word ending **-ture**.

For example:

mixture

picture

sculpture

creature

A similar sound is /zhuh/, which is usually made with the ending **-sure**.

For example:

treasure

leisure

pressure

closure

1 Write the correct ending for each of the following words.

enclo _____

adven _____

fu _____

depar _____

mea _____

reas _____

2 Circle the correct spelling of the word in each row.

immature

imature

immasure

expoture

exposure

expossure

punkture

puncsure

puncture



Words which end in the /zhun/ sound usually have the word ending **-sion**.

For example:

version

collision

conclusion

confusion

precision

revision

vision

1 Edit and improve the following words.

exclution

ilussion

inclusion

2 Circle the correct spelling of the word in each row.

intrusion

intrussion

intrution

ocassion

occasion

occation

3 Write down as many smaller words as you can, using letters from the word **television**.

The suffix **-ous** is added to the end of a **noun** to make an **adjective**.

Sometimes the root word changes before the suffix is added.

The **e** at the end of a root word is usually dropped before adding **-ous**.

For example:

carnivore + ous = carnivorous

our is changed to **or** before adding **-ous**.

For example:

humour + ous = humorous

When a word ends in a **consonant** and a **y**, change the **y** to an **i** before adding the suffix **-ous**.

For example:

victory + ous = victorious

When a word ends with a **vowel** and a **y** keep the **y**.

For example:

joy + ous = joyous

If none of the other rules apply, just add **-ous** onto the ending.

For example:

poison + ous = poisonous

1 Complete the table below.

Noun	+ous	Adjective
danger	+ous	
	+ous	envious
luxury	+ous	
adventure	+ous	
	+ous	slanderous
fame	+ous	

2 Which letter is missing from the following words? Circle one letter for each word.

couragous r e i

hazardus z d o

prosprous s p e

tremndous m e s

Words that end with a /shun/ sound can be spelt in many different ways.

If the root word ends in **t** or **te**, **-tion** is added (and the **e** removed).

For example:

relate + tion = relation

If the root word ends in **c** or **cs**, **-cian** is added (after the end letter has been removed).

For example:

music + cian = musician

If the root word ends in **ss** or **mit**, **-ssion** is added (after the ending has been removed).

For example:

express + ssion = expression and **permit + ssion = permission**

If the root word ends in **d** or **se**, **-sion** is added (after the ending has been removed).

For example:

extend + sion = extension and **tense + sion = tension**

1 Write the correct ending for each of the following words.

educa_____

atten_____

inven_____

ac_____

electri_____

comple_____

2 Circle the correct spelling of the word in each row.

expandtion

expancian

expansion

transmission

transmition

transmision

excepcian

excepsion

exception

politician

politission

politition

S48/S49: Words with the /k/ sound spelt ch and words with the /sh/ sound spelt ch

Words of Greek origin often have the /k/ sound spelt with ch.

Examples include:

scheme

chaos

character

Words of French origin often have the /sh/ sound spelt with ch.

Examples include:

chalet

ricochet

machine

1 Write the words below in the correct column.

/k/ sound spelt with ch	/sh/ sound spelt with ch

chef

anchor

monarch

parachute

brochure

echo

2 Circle the correct spelling of the word in each row.

khemistry

chemistry

cemistry

orchestra

orcestra

orkhestra

teknology

technology

tecnology

S50: Words ending with the /g/ sound spelt -gue and the /k/ sound spelt -que

Words of French origin often have the /g/ sound spelt -gue.

Examples include:

league

tongue

fatigue

Words of French origin often have the /k/ sound spelt -que.

Examples include:

unique

antique

mosque

1 Write the correct ending for each of the following words.

ro_____

bouti_____

che_____

grotes_____

catalo_____

epilo_____

va_____

pictures_____

intri_____

2 Which letter is missing from the following words? Circle **one** letter for each word.

dialoge l u g

monoloue n q g

plaqu g u e

colleague l e q



Words of Latin origin often have the /s/ sound spelt sc.

Examples include:

science

crescent

discipline

fascinating

ascent

scenery

scissors

descend

scented

1 Match each word to the correct definition.

Word
scissors
scent
ascent
crescent

Definition
A climb or walk to the summit of a mountain or hill.
An instrument used for cutting.
The curved sickle shape of the waxing or waning moon.
A distinctive smell, especially one that is pleasant.

2 Circle the correct spelling of the word in each row.

scientist

sientist

csientist

discending

descending

desending

disciples

dissiples

dicsiples

S52: Words with the long /a/ sound spelt ei, eigh, or ey

There are no rules about which of these to use so you just have to learn them!

Examples include:

Long /a/ spelt ei	Long /a/ spelt eigh	Long /a/ spelt ey
reindeer	neighbour	obey
vein	weight	they
reign	freight	survey
beige	eighteen	grey
veil	eighth	convey

- 1 Write the correct word to complete the following sentences. Use the words in the table above to help you.

How much do you _____?

We made a _____ to find out about people's views on the new canteen.

My older sister is _____ and she has just started university.

The _____ train carries goods all around the country.

As the wind blew, the bride's _____ lifted.

The _____ pulled Father Christmas's _____.

- 2 Write down as many smaller words as you can, using letters from the word **neighbourhood**.

By adding the suffix **-cious** or **-tious** to a root word, we can turn a **noun** into an **adjective**.

If the root word ends in **-ce/-cion**, remove **-ce/-cion** and replace it with **-cious**.

For example:

space + cious = spacious

If the root word ends in **-tion**, remove **-tion** and replace it with **-tious**.

For example:

ambition + tious = ambitious

Be careful! Not all words follow these rules.

For example:

price + cious = precious

conscience + tious = conscientious

1 Complete the table below.

Noun	+cious/tious	Adjective
infection	+cious/tious	
suspicion	+cious/tious	
	+cious/tious	nutritious
	+cious/tious	malicious
	+cious/tious	fictitious

2 Write the correct ending for each of the following words.

conten_____

frac_____

lus_____

gra_____

preco_____

cau_____

scrump_____

vi_____

deli_____

Words ending with **-cial** usually have a **vowel letter** (a, e, i, o, u) before the /shul/ sound.

For example:

official

artificial

beneficial

special

Words ending with **-tial** usually have a **consonant letter** before the /shul/ sound.

For example:

partial

torrential

influential

potential

Be careful! Some words do not follow this rule.

For example:

spatial

initial

financial

1 Write the correct word to complete each of the following sentences.

Last Christmas, we bought an _____ Christmas tree.

A bank manager came to give us _____ advice for the future.

There was a _____ eclipse of the moon last night.

We received an _____ letter about the football competition.

A birthday is a _____ day.

The _____ rain marked an end to the golf tournament.

2 Write down as many smaller words as you can, using letters from the word **influential**.

-ant, -ance and -ancy are normally used if there is a related word ending in -ation.

For example:

observant

observance

observation

Be careful! You can have **assistant**, **assistance** but **not** **assitastion**.

-ent, -ence and -ency are normally used if there is a soft /c/, soft /g/ or soft /qu/ sound before it in the word.

For example:

decent

innocence

frequency

1 Circle the correct ending for each of the following words.

transpar_____ ent / ant

dec _____ ency / ancy

toler _____ ence / ance

expect _____ ent / ant

hesit _____ ency / ancy

2 Circle the correct spelling of the word in each row.

frequent frequent freequent

expectency expectancy exspectency

coinsidence coincidance coincidence



-able and -ably are normally used if there is a **related word ending in -ation**.

For example:

adorable

adorably

adoration

Be careful! **Changeable** and **noticeable** don't have related words ending in -ation.

-ible and -ibly are normally used if a **complete root word cannot be heard** before it.

For example:

horrible

horribly

Be careful! In the case of **sensible**, the complete root word can be heard.

1 Draw lines to match each word with the correct ending.

poss _____

comfort _____

reason _____

vis _____

ible

able

2 Draw lines to match each word with the correct ending.

terr _____

incred _____

reli _____

consider _____

ibly

ably



The final r is doubled if the -fer is stressed when the ending is added.

The final r is not doubled if the -fer is no longer stressed when the ending is added.

For example:

final r is doubled	final r is not doubled
referral/referred/referring	reference/referee
preferring/preferred	preference
transferring/transferred	transference

1 Write the correct word to complete the following sentences.

Following a bad tackle, the _____ showed his red card.

Do you have a _____ for which ice cream flavour you have?

I have always _____ reading non-fiction books to fiction.

Unfortunately, my favourite player is _____ to a different team next season.

When you go for a new job, it is important to have a good _____ from your previous employer.

The doctor _____ my nana to an eye specialist.

2 Write down as many smaller words as you can, using letters from the word **transference**.

“i before e except after c”

This applies to words with a long /e/ sound where /e/ is spelt **ei** and comes after **c**.

For example:

receive

deceive

conceive

ceiling

Be careful! **Protein**, **caffeine** and **seize** all have the **ei** spelling pattern but not after **c**.

1 Circle the correct spelling of the word in each row.

reciept

receipt

receipt

perceive

percieve

perseive

decietful

diceitful

deceitful



2 Match each word to the correct definition.

Word
conceive
receive
ceiling
deceive

Definition
Be given, presented with, or paid.
Form or devise (a plan or an idea) in the mind.
Deliberately cause (someone) to believe something that is not true.
The upper interior surface of a room.

ough is used in many words. It makes many different sounds:

ough as /uff/ rough enough	ough as /or/ ought bought thought nought brought fought	ough as /off/ cough
ough as /oo/ through		ough as /oa/ though although
ough as /uh/ thorough borough		ough as /ow/ plough bough

1 Write the correct word to complete each of the following sentences.

Jamal _____ he had closed the front door this morning.

Farmers around the world _____ their fields before planting new crops.

During the science experiment, we investigated whether the _____ surface would slow the car down.

Keisha _____ cakes to share for her birthday.

I _____ to go home before it gets dark.

My brother and sister _____ over the last chocolate.

2 Write down as many smaller words as you can, using letters from the word **breakthrough**.

Some letters, which are no longer sounded, used to be sounded hundreds of years ago, such as the **k** in **knight**. There are many words with silent letters, including:

silent k	silent w	silent b	silent n
k night	w rite	bo m	hym n
k nee	w restle	dou b t	sole m n
k nuckle	w rack	thum b	colu m n

1 Circle the silent letters in each of the following words.

knot

autumn

debt

wrapper

2 Write each of the words below in the correct column.

castle

limb

whistle

design

crumb

gnome

subtle

rustle

listen

gnat

lamb

sign

Silent g	Silent b	Silent t

Homophones are words that have the **same or similar pronunciation** but **different spelling and meanings**.

For example:

affect / effect

principle / principal

aisle / isle

father / farther

guessed / guest

steel / steal

past / passed

profit / prophet

morning / mourning

whose / who's

practise / practice

heard / herd

1 Circle the correct word in each of the following sentences.

I **practise / practice** the piano every day after school.

There was a large **heard / herd** of cattle blocking the road.

As we walked down the supermarket **aisles / isles**, I looked for the things on my mum's list.

Every **morning / mourning**, we sing a song during assembly.

Our school **principle / principal** is always very busy.

The **profit / prophet** foretold the future.

2 Write down as many other homophones as you can.

10-Minute Test

Use a stopwatch or a timer to give yourself ten minutes to complete the following questions. Use the answer sheet to check your work and take some time to revisit any areas in which you need to improve.



1 Edit and improve the following words.

piramyd

countrie

imachure

conclution

2 Which letter is missing from the following common exception words? Circle **one** letter for each word.

corespond r s p

sincerly n r e

comptition m e t

vegetable g e t



3 Match each word to the correct definition.

Word
potential
spatial
initial
financial

Definition
Relating to finance.
Having or showing the capacity to develop into something in the future.
Relating to or occupying space.
Existing or occurring at the beginning.

4 Draw lines to match each root word with the correct ending.

music relate permit tense

-tion -sion -ssion -cian

5 Complete the table below.

Adjective	+ly	Adverb
rapid	+ly	
bumpy	+ly	
	+ly	energetically
noisy	+ly	
careless	+ly	
	+ly	gracefully

6 Circle the correct ending for each of the following words.

magnific_____ ence / ance

transluc_____ ent / ant

redund_____ ency / ancy

tru_____ ent / ant

ignor_____ ence / ance

7 Draw lines to match each prefix with the correct root word so that it makes a new word.

Prefix
anti-
auto-
dis-
mis-
im-
in-

Root word
biography
appoint
calculate
social
direct
moral

8 Circle the correct word in each of the following sentences.

We had a special **guessed / guest** in school today.

It is wrong to **steel / steal** things.

Mr Jones asked, "**Whose / Who's** coat is this?"

As we walked up the mountain, we **past / passed** a herd of goats.

Freya's **father / farther** picked her up from school yesterday.

What is the **affect / effect** of adding vinegar to bicarbonate of soda?

9 Circle the correct spelling of the word in each row.

thort thought thought

enuff enough enuogh

thorough thorough thorough

brought thorough brouht



10 Write down as many smaller words as you can, using letters from the word **catalogue**.
